

brand	MEP
-------	------------

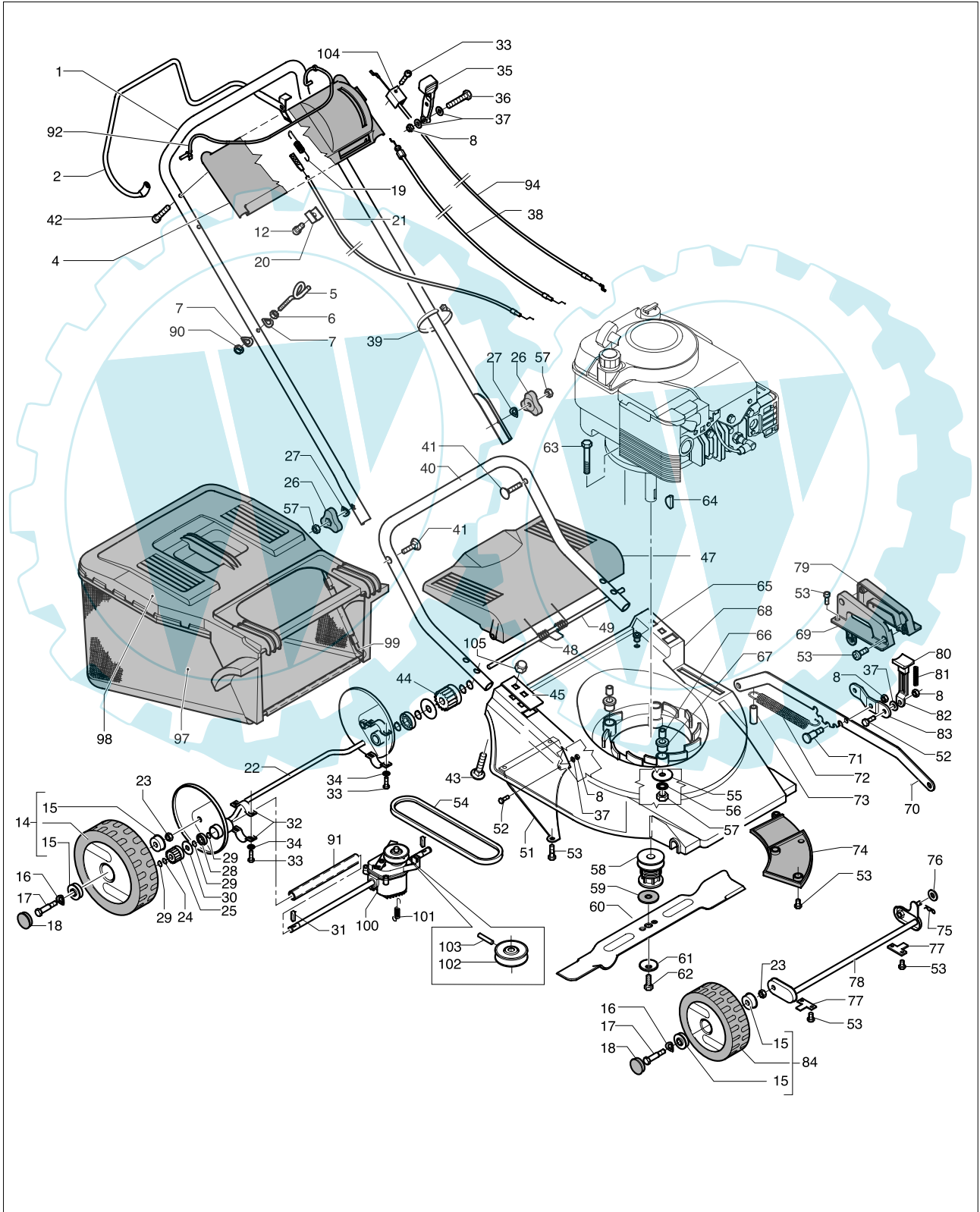
date	FEB/03	SHEET 1/3
------	--------	-----------

Model

MP 500 S

Product number

953875429



brand	MEP
-------	------------

date	FEB/03	SHEET 2/3
------	--------	-----------

Model

MP 500 S

Product number

953875429

Pos.	PN ELX	PN MEP	DESCRIPTION	Q.ty	NOTE
1	531205589	10135663	upper handle	1	
2	531205616	10135883	lever	1	
4	531205607	10135770	dash-board	1	
5	531205169	10121470	cable hook	1	
6	531207165	10501200	nut	1	M6 H6 UNI 5587-6S-ZB
7	531204961	10115900	washer	2	6,5E
8	531208492	20282100	nut	5	M5 H7 UNI7473-ZB
9	531208207	20135323	left side grass catcher	1	
10	531208203	20135313	right side grass catcher	1	
11	531205547	10135330	tie rod	1	
12	531207937	10878000	screw	2	D.8 x 330 TCTC 3,9x16
13	531205545	10135303	grass catcher	1	
14	531204461	09135294	posterior wheel	2	D210/26 TACCH.
15	531205214	10121900	ball-bearing	8	UNI 8840-B12(13/24/0,8
16	531206644	10275100	washer	4	
17	531205042	10120090	screw	4	
18	531204936	10114804	plug	4	
21	531206000	10146340	clutch cable	1	
22	531205538	10135283	rear axle	1	
23	531207978	20101700	nut	4	M10 H8 UNI 5588-6S ZB
24	531208859	20761300	washer	2	D.12,4x17x0,3
25	531205045	10120160	pinion	1	DX
26	531204923	10114303	knob	2	
27	531207090	10402402	washer	2	8,5
28	531208778	20657600	ball-bearing	2	D.12/28/8 6001/2RS
29	531208772	20655800	seeger	6	D.12E DIN 471
30	531207847	10831200	washer	2	D.12/34/0,7 ZB
31	531205108	10121160	key	2	"S" 5x5(-0,05)x19,2 DIAG
32	531206652	10281200	bearing	4	
33	531208217	20135730	screw	4	TC.TC 2F D 5x25
34	531207170	10501250	washer	4	D.4/12/1
35	531205139	10121263	accelerator lever	1	
36	531207836	10830000	screw	1	TE M5x25 UNI 5739-8,8-ZB
37	531206666	10284700	washer	4	5/15/1,5 ZB
38	531207754	10800400	accelerator cable	1	mm 1385/80 B&S
39	531205581	10135600	clamp	1	160X4,5
40	531205496	10135113	handle lowere	1	
41	531207089	10402401	screw	2	TTSQ M8x50 TF ZB
42	531208844	20734900	screw	4	TCTC 4,3x16 FIX ZB
43	531207842	10830800	screw	4	TTSQ M6x40 1/2F ZV
44	531205046	10120170	pinion	1	SX
45	531205582	10135640	plate	2	
47	531205485	10135071	deflector	1	
48	531206180	10155190	spring	1	
49	531205493	10135080	tie rod	1	D.8 x 417
51	531205469	10135050	deflector	1	
52	531207838	10830300	screw	2	TE M5x16 UNI 5739-8,8-ZB
53	531208216	20135720	screw	1	TCTC2FD.5x16 AC



Service

brand	MEP
-------	------------

ELECTROLUX OUTDOOR PRODUCTS

date	FEB/03	SHEET 3/3
------	--------	-----------

Model

MP 500 S

Product number

953875429

Pos.	PN ELX	PN MEP	DESCRIPTION	Q.ty	NOTE
54	531207119	10427200	belt	1	Z 28 SPEC. 10X700 3L290
55	531205552	10135380	washer	3	8x30x3ZP
56	531207981	20106200	washer	6	D.8E DIN 6798
57	531207982	20106300	nut	5	M8 H8 UNI 5587-6S ZB
58	531207276	10548300	bearing blade	1	
59	531207243	10531700	washer	1	17,2x50x1,5+0,1
60	531211652	10173170	blade	1	
61	531207237	10530900	washer	1	11x50x2,5
62	531206649	10280901	screw	1	TE D.3/8"UNFX 65(8.8)
63	531206681	10291000	screw	2	TE 8X60
	531207925	10876300		1	TE 8X100
64	531204907	10100900	key	1	4x6,5 UNI6606 WODRUF
65	531205557	10135413	cable lock	1	
66	531205549	10135350	spacer	3	H.35
67	531205548	10135343	bush	3	
68	531204442	09135010	deck	1	
69	531205501	10135160	right handle	1	
70	531205529	10135233	rod	1	
71	531205526	10135210	pin	1	
72	531205530	10135240	spring	1	
73	531205531	10135250	spacer	1	H.82
74	531205534	10135263	housing	1	
75	531206653	10281400	cotter pin	2	1,8 x 33
76	531204906	10069200	washer	1	D8
77	531205536	10135270	support	2	
78	531205051	10120290	front axle	1	
79	531205510	10135170	left handle	1	
80	531205519	10135180	push-button	1	
81	531205527	10135220	spring	1	
82	531205524	10135190	rod	1	
83	531205525	10135200	lever	1	
84	531204371	09120084	front wheel	2	D170/26 TACCH.
90	531208491	20281800	nut	1	M6 H8 UNI7473-ZB
91	531207697	10766503	spacer tube		
92	531205618	10135893	clutch lever	1	
93	531208217	20135730	screw	1	TC.TC 2F D 5x25
94	531205191	10121610	cable	1	B&S - 1097/148
97	531208259	20140373	sac	1	
98	531211686	20140393	sack upper	1	
99	531208262	20140383	frame		
100	531204755	09767400	reducer complet	1	
101	531205216	10121920	spring	1	
102	531208899	20768203	gear pulley	1	
103	531207703	10768400	resilient pin	1	
104	531208043	20121983	support	1	
105	531206305	10160240	nut	4	M6-DIM986-ZBCN